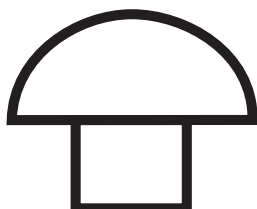


# 6-Lobe Pin



## 6-Lobe Pin - Button Head Machine Screws - A2 Stainless Steel



### Dimensions (mm)

SCREW TYPE		METRIC MACHINE SCREWS					
DIMENSIONS	6-LOBE PIN	M3	M4	M5	M6	M8	M10
BUTTON HEAD		5.5	7.4	9.3	10.4	13.7	17.0
		1.6	2.1	2.7	3.2	4.3	5.8

### Material and Finish

<b>Material:</b>	A2 Stainless Steel
<b>Heat Treatment:</b>	None
<b>Finish:</b>	Passivated

### Part Numbers & Driver Sizes

LENGTH GAUGE	6 mm	8 mm	10 mm	12 mm	16 mm	20 mm	25 mm	30 mm	35 mm	40 mm	45 mm	50 mm	55 mm	60 mm	65 mm	70 mm	75 mm	80 mm	100 mm	DRIVER SIZE
<b>M3</b>	RTBM 0306	RTBM 0308	RTBM 0310	RTBM 0312	RTBM 0316	RTBM 0320	RTBM 0325	RTBM 0330												T10
<b>M4</b>	RTBM 0406	RTBM 0408	RTBM 0410	RTBM 0412	RTBM 0416	RTBM 0420	RTBM 0425	RTBM 0430	RTBM 0435	RTBM 0440	RTBM 0445	RTBM 0450		RTBM 0460						T20
<b>M5</b>		RTBM 0508	RTBM 0510	RTBM 0512	RTBM 0516	RTBM 0520	RTBM 0525	RTBM 0530	RTBM 0535	RTBM 0540	RTBM 0545	RTBM 0550		RTBM 0560						T25
<b>M6</b>		RTBM 0608	RTBM 0610	RTBM 0612	RTBM 0616	RTBM 0620	RTBM 0625	RTBM 0630	RTBM 0635	RTBM 0640	RTBM 0645	RTBM 0650		RTBM 0660				RTBM 0680		T30
<b>M8</b>			RTBM 0810	RTBM 0812	RTBM 0816	RTBM 0820	RTBM 0825	RTBM 0830	RTBM 0835	RTBM 0840		RTBM 0850	RTBM 0855	RTBM 0860			RTBM 0875	RTBM 0880	RTBM 08100	T40
<b>M10</b>					RTBM 1016	RTBM 1020	RTBM 1025	RTBM 1030	RTBM 1035	RTBM 1040		RTBM 1050		RTBM 1060	RTBM 1065	RTBM 1070		RTBM 1080	RTBM 10100	T45

### Additional Information

**Installation:** 6-Lobe Pin - see video

**Removal:** 2-Way Removable Screw



Every effort has been made to ensure the accuracy of information provided in this datasheet. Hafren Fasteners cannot warrant the information however, expressly or implied, and any liability arising from it is expressly excluded. Customers must satisfy themselves as to the suitability of products and the technical information relating to them, and it is recommended that you conduct your own tests to establish suitability. All sizes shown are in mm without min and max tolerances and are guide sizes. Hafren Fasteners reserve the right to change/alter sizes without notice. This does not effect your statutory rights.

# 6-Lobe Pin



## Weight per Pack

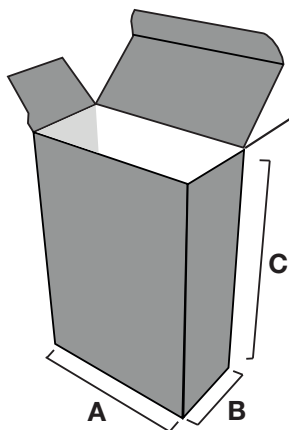
LENGTH GAUGE	6 mm	8 mm	10 mm	12 mm	16 mm	20 mm	25 mm	30 mm	35 mm	40 mm	45 mm	50 mm	55 mm	60 mm	65 mm	70 mm	75 mm	80 mm	100 mm	DRIVER SIZE
M3	Box 9 55g	Box 9 58g	Box 9 67g	Box 9 76g	Box 9 94g	Box 9 108g	Box 9 127g	Box 9 153g												T10
M4	Box 9 106g	Box 9 114g	Box 9 127g	Box 9 142g	Box 9 171g	Box 9 200g	Box 12 237g	Box 12 272g	Box 18 324g	Box 18 354g	Box 18 396g	Box 18 429g		Box 22 521g						T20
M5		Box 9 115g	Box 9 210g	Box 9 241g	Box 12 295g	Box 12 332g	Box 18 398g	Box 18 457g	Box 18 533g	Box 18 586g	Box 22 663g	Box 22 722g		Box 22 841g						T25
M6		Box 9 278g	Box 12 315g	Box 12 353g	Box 12 413g	Box 18 494g	Box 18 564g	Box 18 657g	Box 18 739g	Box 22 840g	Box 22 945g	Box 27 1,006g		Box 27 1,200g				Box 30 1,555g		T30
M8			Box 18 652g	Box 18 689g	Box 18 862g	Box 18 937g	Box 22 1,151g	Box 22 1,270g	Box 27 1,425g	Box 27 1,608g		Box 30 1,884g	Box 30 2,087g	Box 30 2,224g			Box 32 2,722g	Box 32 2,860g	Box 32 3,499g	T40
M10					Box 22 1,466g	Box 27 1,659g	Box 27 1,907g	Box 27 2,164g	Box 30 2,346g	Box 30 2,664g		Box 32 3,152g		Box 32 3,684g	Bag 3,840g	Bag 4,140g		Bag 4,602g	BAG 5,635g	T45

\*All parts packed in 100pcs - Please see below pack dimension guide

## Pack Dimensions Guide

BOX SIZE DIMENSION	BOX 9	BOX 12	BOX 18	BOX 22	BOX 27	BOX 30	BOX 32	POLYTHENE BAG
A	51mm	57mm	71mm	81mm	89mm	101mm	114mm	250mm
B	32mm	36mm	47mm	54mm	68mm	76mm	82mm	300mm
C	55mm	66mm	90mm	111mm	124mm	128mm	171mm	

### Cardboard Box



### Polythene Bag

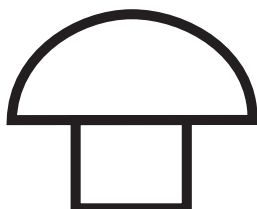


Every effort has been made to ensure the accuracy of information provided in this datasheet. Hafren Fasteners cannot warrant the information however, expressly or implied, and any liability arising from it is expressly excluded. Customers must satisfy themselves as to the suitability of products and the technical information relating to them, and it is recommended that you conduct your own tests to establish suitability. All sizes shown are in mm without min and max tolerances and are guide sizes. Hafren Fasteners reserve the right to change/alter sizes without notice. This does not effect your statutory rights.



# 6-Lobe Pin



## 6-Lobe Pin - Button Head Self Tapping Screws - A2 Stainless Steel



### Dimensions (mm)

SCREW TYPE		AB TYPE SELF TAPPING SCREWS					
6-LOBE PIN	DIMENSIONS	No. 4	No. 6	No. 8	No. 10	No. 12	No. 14
		2.9mm	3.5mm	4.2mm	4.8mm	5.5mm	6.3mm
BUTTON HEAD		5.5	6.7	7.4	9.3	10.2	11.0
		1.5	2.6	2.2	2.6	3.1	3.4

### Material and Finish

**Material:** A2 (304) Stainless Steel  
**Heat Treatment:** None  
**Finish:** Passivated

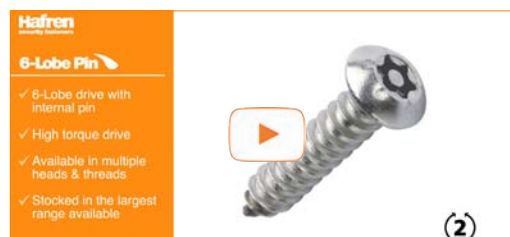
### Part Numbers & Driver Size

LENGTH		3/8"	1/2"	5/8"	3/4"	1"	1 1/4"	1 1/2"	2"	2 1/2"	3"	DRIVER SIZE
GAUGE		9.5mm	13mm	16mm	19mm	25mm	32mm	38mm	50mm	63mm	75mm	
4	2.9mm		RTBS04D		RTBS04F							T10
6	3.5mm	RTBS06C	RTBS06D	RTBS06E	RTBS06F	RTBS06G		RTBS06I	RTBS06J			T10
8	4.2mm	RTBS08C	RTBS08D	RTBS08E	RTBS08F	RTBS08G	RTBS08H	RTBS08I	RTBS08J			T15
10	4.8mm	RTBS10C	RTBS10D	RTBS10E	RTBS10F	RTBS10G	RTBS10H	RTBS10I	RTBS10J			T25
12	5.5mm					RTBS12G	RTBS12H	RTBS12I	RTBS12J	RTBS12K	RTBS12L	T27
14	6.3mm				RTBS14F	RTBS14G	RTBS14H	RTBS14I	RTBS14J			T30

### Additional Information

**Installation:** 6-Lobe Pin - see video

**Removal:** 2-Way Removable Screw



Every effort has been made to ensure the accuracy of information provided in this datasheet. Hafren Fasteners cannot warrant the information however, expressly or implied, and any liability arising from it is expressly excluded. Customers must satisfy themselves as to the suitability of products and the technical information relating to them, and it is recommended that you conduct your own tests to establish suitability. All sizes shown are in mm without min and max tolerances and are guide sizes. Hafren Fasteners reserve the right to change/alter sizes without notice. This does not effect your statutory rights.

# 6-Lobe Pin



## Weight per Pack

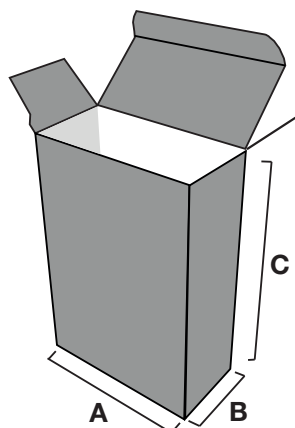
GAUGE	LENGTH	3/8"	1/2"	5/8"	3/4"	1"	1 1/4"	1 1/2"	2"	2 1/2"	3"	DRIVER SIZE
		9.5mm	13mm	16mm	19mm	25mm	32mm	38mm	50mm	63mm	75mm	
4	2.9mm		Box 9 65g		Box 9 84g							T10
6	3.5mm	Box 9 85g	Box 9 107g	Box 9 128g	Box 9 142g	Box 9 168g		Box 18 240g	Box 18 298g			T10
8	4.2mm	Box 9 113g	Box 9 133g	Box 9 159g	Box 9 173g	Box 12 214g	Box 12 268g	Box 18 305g	Box 18 407g			T15
10	4.8mm	Box 9 164g	Box 9 206g	Box 9 224g	Box 12 251g	Box 12 314g	Box 18 377g	Box 18 428g	Box 22 532g			T25
12	5.5mm					Box 18 420g	Box 18 518g	Box 18 580g	Box 22 752g	Box 27 920g	Box 27 1,085g	T27
14	6.3mm				Box 18 452g	Box 18 545g	Box 18 675g	Box 22 769g	Box 22 989g			T30

\*All parts packed in 100pcs - Please see below Pack Dimension guide

## Box Dimensions Guide

BOX SIZE	BOX 9	BOX 12	BOX 18	BOX 22	BOX 27	BOX 30	BOX 32
A	51mm	57mm	71mm	81mm	89mm	101mm	114mm
B	32mm	36mm	47mm	54mm	68mm	76mm	82mm
C	55mm	66mm	90mm	111mm	124mm	128mm	171mm

### Cardboard Box

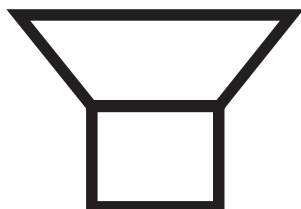


Every effort has been made to ensure the accuracy of information provided in this datasheet. Hafren Fasteners cannot warrant the information however, expressly or implied, and any liability arising from it is expressly excluded. Customers must satisfy themselves as to the suitability of products and the technical information relating to them, and it is recommended that you conduct your own tests to establish suitability. All sizes shown are in mm without min and max tolerances and are guide sizes. Hafren Fasteners reserve the right to change/alter sizes without notice. This does not effect your statutory rights.



# 6-Lobe Pin



## 6-Lobe Pin - Countersunk Machine Screw - A2 Stainless Steel



### Dimensions (mm)

SCREW TYPE 6-LOBE PIN DIMENSIONS		METRIC MACHINE SCREWS					
		M3	M4	M5	M6	M8	M10
COUNTERSUNK HEAD		5.6	7.8	9.8	11.6	15.2	17.4
		2.0	2.3	2.8	3.3	5.0	5.1

### Material and Finish

**Material:** A2 Stainless Steel

**Heat Treatment:** None

**Finish:** Passivated

### Part Numbers & Driver Size

GAUGE	LENGTH																DRIVER SIZE
	6mm	8mm	10mm	12mm	16mm	20mm	25mm	30mm	35mm	40mm	45mm	50mm	55mm	60mm	70mm	80mm	
M3	RTCM 0306	RTCM 0308	RTCM 0310	RTCM 0312	RTCM 0316	RTCM 0320	RTCM 0325										T10
M4	RTCM 0406	RTCM 0408	RTCM 0410	RTCM 0412	RTCM 0416	RTCM 0420	RTCM 0425	RTCM 0430		RTCM 0440	RTCM 0445	RTCM 0450			RTCM 0470		T20
M5		RTCM 0508	RTCM 0510	RTCM 0512	RTCM 0516	RTCM 0520	RTCM 0525	RTCM 0530		RTCM 0540	RTCM 0545	RTCM 0550		RTCM 0560		RTCM 0580	T25
M6		RTCM 0608	RTCM 0610	RTCM 0612	RTCM 0616	RTCM 0620	RTCM 0625	RTCM 0630	RTCM 0635	RTCM 0640		RTCM 0650		RTCM 0660		RTCM 0680	T30
M8					RTCM 0816	RTCM 0820	RTCM 0825	RTCM 0830		RTCM 0840		RTCM 0850	RTCM 0855	RTCM 0860		RTCM 0880	T40
M10							RTCM 1025		RTCM 1035	RTCM 1040		RTCM 1050		RTCM 1060		RTCM 1080	T45

### Additional Information

**Installation:** 6-Lobe Pin - see video

**Removal:** 2-Way Removable Screw



Every effort has been made to ensure the accuracy of information provided in this catalogue. Hafren Fasteners cannot warrant the information however, expressly or implied, and any liability arising from it is expressly excluded. Customers must satisfy themselves as to the suitability of products and the technical information relating to them, and it is recommended that you conduct your own tests to establish suitability. All sizes shown are in mm without min and max tolerances and are guide sizes. Hafren Fasteners reserve the right to change/alter sizes without notice. This does not effect your statutory rights.

# 6-Lobe Pin



## Weight per Pack

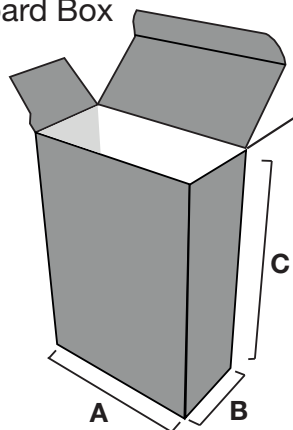
LENGTH GAUGE	6mm	8mm	10mm	12mm	16mm	20mm	25mm	30mm	35mm	40mm	45mm	50mm	55mm	60mm	70mm	80mm	DRIVER SIZE
M3	Box 9 46g	Box 9 54g	Box 9 63g	Box 9 70g	Box 9 87g	Box 9 102g	Box 9 125g										T10
M4	Box 9 85g	Box 9 100g	Box 9 117g	Box 9 128g	Box 9 158g	Box 9 185g	Box 12 227g	Box 12 265g		Box 18 340g	Box 18 375g	Box 18 415g			Box 22 575g		T20
M5		Box 9 160g	Box 9 191g	Box 9 220g	Box 12 264g	Box 12 317g	Box 18 374g	Box 18 437g		Box 18 557g	Box 18 616g	Box 22 675g		Box 27 816g		Box 30 1,050g	T25
M6		Box 9 260g	Box 12 290g	Box 12 320g	Box 12 406g	Box 18 473g	Box 18 543g	Box 18 644g	Box 18 714g	Box 22 817g		Box 22 989g		Box 27 1,137g		Box 30 1,505g	T30
M8					Box 18 663g	Box 18 672g	Box 22 936g	Box 22 1,232g		Box 27 1,516g		Box 27 1,736g	Box 30 1,970g	Box 30 2,177g		Box 32 2,783g	T40
M10							Box 27 1,870g		Box 30 2,070g	Box 30 2,660g		Box 32 3,175g		Box 32 3,316g		Bag 4,280g	T45

\*All parts packed in 100pcs - Please see below Pack Dimension guide

## Pack Dimensions Guide

BOX SIZE DIMENSION	BOX 9	BOX 12	BOX 18	BOX 22	BOX 27	BOX 30	BOX 32	POLYTHENE BAG
A	51mm	57mm	71mm	81mm	89mm	101mm	114mm	250mm
B	32mm	36mm	47mm	54mm	68mm	76mm	82mm	300mm
C	55mm	66mm	90mm	111mm	124mm	128mm	171mm	

### Cardboard Box



### Polythene Bag

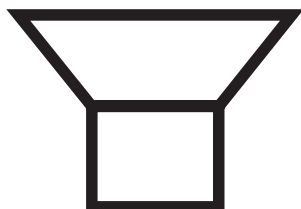


Every effort has been made to ensure the accuracy of information provided in this catalogue. Hafren Fasteners cannot warrant the information however, expressly or implied, and any liability arising from it is expressly excluded. Customers must satisfy themselves as to the suitability of products and the technical information relating to them, and it is recommended that you conduct your own tests to establish suitability. All sizes shown are in mm without min and max tolerances and are guide sizes. Hafren Fasteners reserve the right to change/alter sizes without notice. This does not effect your statutory rights.



# 6-Lobe Pin



## 6-Lobe Pin - Countersunk Self Tapping Screws - A2 Stainless Steel



### Head Dimensions

SCREW TYPE <b>6-LOBE PIN</b>	DIMENSIONS	AB TYPE SELF TAPPING SCREWS					
		No. 4	No. 6	No. 8	No. 10	No. 12	No. 14
		2.9mm	3.5mm	4.2mm	4.8mm	5.5mm	6.3mm
COUNTERSUNK HEAD		4.9	6.6	7.9	9.3	10.6	12.4
		1.5	2.1	2.5	3.0	3.4	3.8

### Material and Finish

**Material:** A2 Stainless Steel  
**Heat Treatment:** None  
**Finish:** Passivated

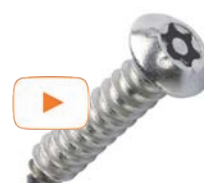
### Part Numbers & Driver Size

GAUGE	LENGTH	3/8"	1/2"	5/8"	3/4"	1"	1 1/4"	1 1/2"	1-3/4"	2"	2 1/2"	3"	4"	DRIVER SIZE
		9.5mm	13mm	16mm	19mm	25mm	32mm	38mm	44mm	50mm	63mm	75mm	100mm	
4	2.9mm		RTCS04D	RTCS04E	RTCS04F	RTCS04G								T10
6	3.5mm		RTCS06D	RTCS06E	RTCS06F	RTCS06G	RTCS06H	RTCS06I						T15
8	4.2mm	RTCS08C	RTCS08D	RTCS08E	RTCS08F	RTCS08G	RTCS08H	RTCS08I	RTCS08IA	RTCS08J	RTCS08K			T20
10	4.8mm		RTCS10D	RTCS10E	RTCS10F	RTCS10G	RTCS10H	RTCS10I		RTCS10J	RTCS10K	RTCS10L	RTCS10N	T25
12	5.5mm				RTCS12F	RTCS12G	RTCS12H	RTCS12I		RTCS12J	RTCS12K	RTCS12L		T27
14	6.3mm				RTCS14F	RTCS14G	RTCS14H	RTCS14I		RTCS14J				T30

### Additional Information

**Installation:** 6-Lobe Pin - see video

**Removal:** 2-Way Removable Screw



(2)

Every effort has been made to ensure the accuracy of information provided in this datasheet. Hafren Fasteners cannot warrant the information however, expressly or implied, and any liability arising from it is expressly excluded. Customers must satisfy themselves as to the suitability of products and the technical information relating to them, and it is recommended that you conduct your own tests to establish suitability. All sizes shown are in mm without min and max tolerances and are guide sizes. Hafren Fasteners reserve the right to change/alter sizes without notice. This does not effect your statutory rights.



# 6-Lobe Pin



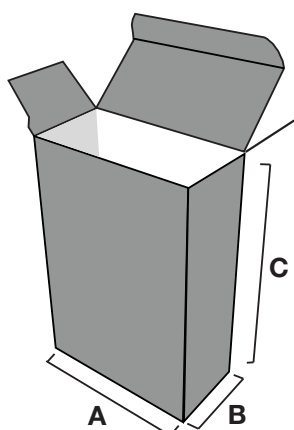
## Weight per Pack

GAUGE	LENGTH	1/2"	1/2"	5/8"	3/4"	1"	1 1/4"	1 1/2"	1-3/4"	2"	2 1/2"	3"	4"	DRIVER SIZE
		9.5mm	13mm	16mm	19mm	25mm	32mm	38mm	44mm	50mm	63mm	75mm	100mm	
4	2.9mm		Box 9 55g	Box 9 53g	Box 9 75g	Box 9 90g								T10
6	3.5mm		Box 9 85g	Box 9 105g	Box 9 116g	Box 9 149g	Box 12 175g	Box 12 213g						T15
8	4.2mm	Box 9 98g	Box 9 118g	Box 9 144g	Box 9 172g	Box 12 208g	Box 12 254g	Box 18 301g	Box 18 344g	Box 18 387g	Box 22 490g			T20
10	4.8mm		Box 9 203g	Box 9 210g	Box 9 225g	Box 12 296g	Box 18 355g	Box 18 418g		Box 22 530g	Box 22 645g	Box 27 760g	Box 30 1,010g	T25
12	5.5mm				Box 12 296g	Box 18 382g	Box 18 424g	Box 18 517g		Box 22 705g	Box 27 862g	Box 27 1,026g		T27
14	6.3mm				Box 18 423g	Box 18 601	Box 18 743g	Box 22 848g		Box 22 1,060g				T30

## Pack Dimensions Guide

DIMENSION	BOX SIZE						
	BOX 9	BOX 12	BOX 18	BOX 22	BOX 27	BOX 30	BOX 32
A	51mm	57mm	71mm	81mm	89mm	101mm	114mm
B	32mm	36mm	47mm	54mm	68mm	76mm	82mm
C	55mm	66mm	90mm	111mm	124mm	128mm	171mm

## Cardboard Box



Every effort has been made to ensure the accuracy of information provided in this datasheet. Hafren Fasteners cannot warrant the information however, expressly or implied, and any liability arising from it is expressly excluded. Customers must satisfy themselves as to the suitability of products and the technical information relating to them, and it is recommended that you conduct your own tests to establish suitability. All sizes shown are in mm without min and max tolerances and are guide sizes. Hafren Fasteners reserve the right to change/alter sizes without notice. This does not effect your statutory rights.



# 6-Lobe Pin



## 6-Lobe Pin - Raised Countersunk Machine Screw - A2 Stainless Steel



### Dimensions (mm)

	SCREW TYPE	
	6-LOBE PIN	
	M3.5	
COUNTERSUNK HEAD	DIMENSIONS	
		6.4
		1.8

### Material and Finish

<b>Material:</b>	A2 Stainless Steel
<b>Heat Treatment:</b>	None
<b>Finish:</b>	Passivated

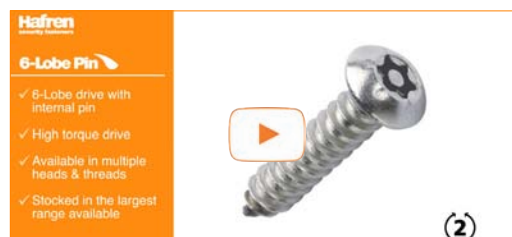
### Part Numbers & Driver Size

GAUGE \ LENGTH	LENGTH								DRIVER SIZE
	12mm	20mm	25mm	30mm	35mm	40mm	50mm	75mm	
M3.5	RTRM3512	RTRM3520	RTRM3525	RTRM3530	RTRM3535	RTRM3540	RTRM3550	RTRM3575	T10

### Additional Information

**Installation:** 6-Lobe Pin - see video

**Removal:** 2-Way Removable Screw



Every effort has been made to ensure the accuracy of information provided in this datasheet. Hafren Fasteners cannot warrant the information however, expressly or implied, and any liability arising from it is expressly excluded. Customers must satisfy themselves as to the suitability of products and the technical information relating to them, and it is recommended that you conduct your own tests to establish suitability. All sizes shown are in mm without min and max tolerances and are guide sizes. Hafren Fasteners reserve the right to change/alter sizes without notice. This does not effect your statutory rights.

# 6-Lobe Pin



**Hafren**  
security fasteners

## Weight per Pack

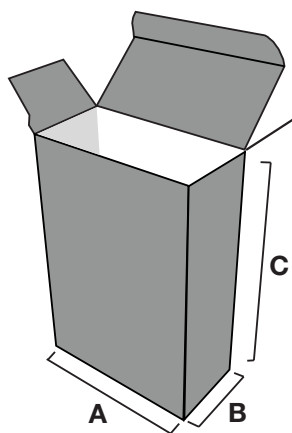
LENGTH GAUGE	12mm	20mm	25mm	30mm	35mm	40mm	50mm	75mm	DRIVER SIZE
M3.5	Box 9 108g	Box 9 156g	Box 9 182g	Box 12 208g	Box 12 240g	Box 18 269g	Box 18 333g	Box 22 485g	T10

\*All parts packed in 100pcs - Please see below pack Dimension guide

## Pack Dimensions Guide

BOX SIZE DIMENSION	BOX 9	BOX 12	BOX 18	BOX 22	BOX 27	BOX 30	BOX 32
A	51mm	57mm	71mm	81mm	89mm	101mm	114mm
B	32mm	36mm	47mm	54mm	68mm	76mm	82mm
C	55mm	66mm	90mm	111mm	124mm	128mm	171mm

### Cardboard Box



Every effort has been made to ensure the accuracy of information provided in this datasheet. Hafren Fasteners cannot warrant the information however, expressly or implied, and any liability arising from it is expressly excluded. Customers must satisfy themselves as to the suitability of products and the technical information relating to them, and it is recommended that you conduct your own tests to establish suitability. All sizes shown are in mm without min and max tolerances and are guide sizes. Hafren Fasteners reserve the right to change/alter sizes without notice. This does not effect your statutory rights.