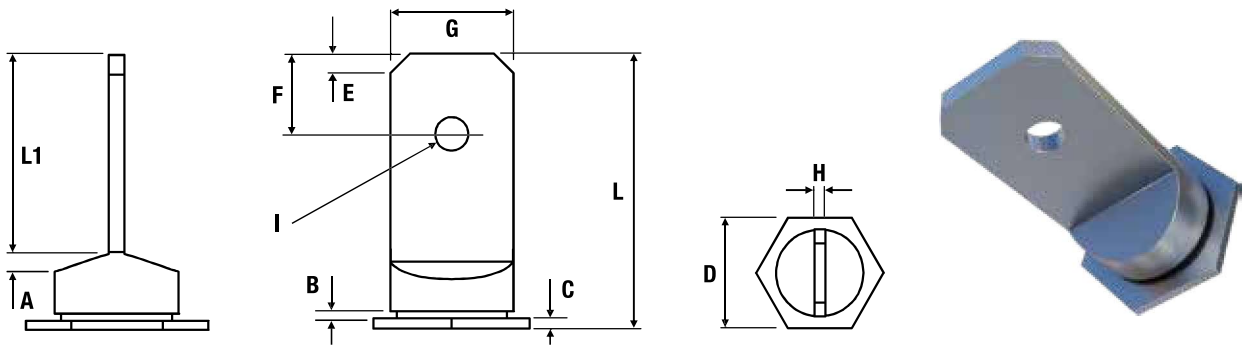


Terminal Pin TR-TER



Metric Dimensions

Electro Tin Plated Steel: TR-TER

Part number	TR-TER
A	1.05
B	0.36
C	0.52
D	8.00
E	1 x 45°
F	4.10
G	6.30
H	0.80
I	1.7 dia.
L	14.00
L1	9.00
Plate G x H	6.3 x 0.8
Recommended hole size ± 0.08	6.40
Min. distance to edge of sheet	7.30
Min. sheet thickness	0.80

TR-TER - Recommended for use in sheet hardness: HRB 80 or less

