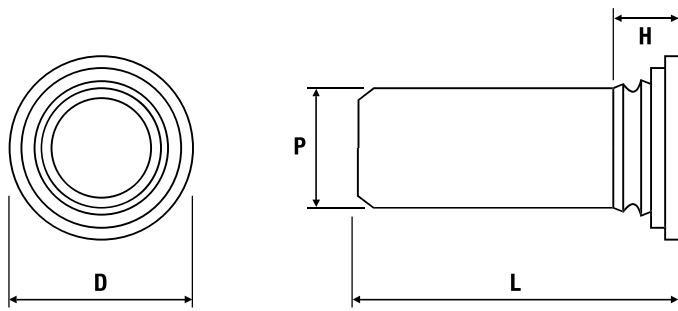


# Flush Head Pin TR-TP/TR-TPS/TR-TP4



## Metric Dimensions

Zinc Plated Steel: TR-TP | Stainless Steel: TR-TPS | 400 Series Stainless Steel: TR-TP4

P pin diameter $\pm 0.05$	3	4	5	6
Min. sheet thickness	1.0			
Recommended hole size	3.5	4.5	5.5	6.5
D $\pm 0.4$	5.20	6.12	7.19	8.13
H max.	2.29	2.29	2.29	2.29
Min. distance to edge of sheet	6.4	7.1	7.61	7.9

Length (L) $\pm 0.4$	3	4	6	8	10	12	16	20

## Metric Performance Data

P pin diameter $\pm 0.05$	3	4	5	6
Test sheet material	Steel			
Installation (kN)	23	27	35	40
Push-out (kN)	1	1.6	1.8	2.2

TR-TP - Recommended for use in sheet hardness: HRB 80 or less  
 TR-TPS - Recommended for use in sheet hardness: HRB 70 or less

TR-TP4 - Recommended for use in sheet hardness: HRB 92 or less

