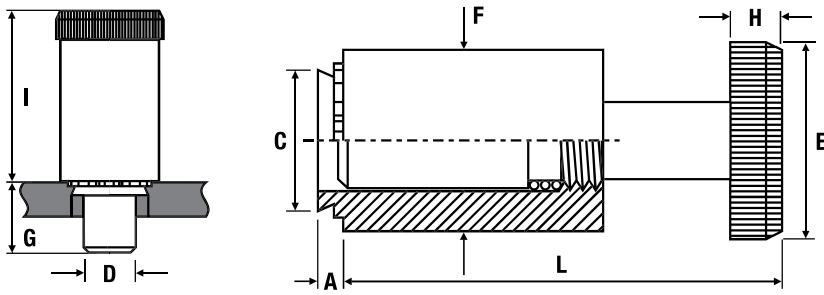


Pin Panel Fastener TR-PTL2/TR-PSL2



Metric Dimensions

Zinc Plated Steel: TR-PTL2 | TR-PSL2

Type	TR-PTL2 (locking)	TR-PSL2 (non-locking)
Plunger diameter code	04	04
Plunger length code	4.0	4.0
A max.	1.47	1.47
Min. sheet thickness	1.53	1.53
Recommended hole size +0.08	8.33	8.33
C max.	8.31	8.31
D -0.13	6.35	6.35
E ±0.25	12.7	12.7
F ±0.25	10.3	10.3
G ±0.25	7.87	7.87
H ±0.25	4.32	4.32
I ±0.25	15.11	12.95
L nom.	22.73	19.81
Min. distance to edge of sheet	8.64	8.64

Metric Performance Data

Type	TR-PTL2 (locking)	TR-PSL2 (non-locking)
Test sheet material	Steel	
Installation (kN)	17.8	17.8
Push-out (N)	2224	2224

TR-PTL2 - Recommended for use in sheet hardness: HRB 80 or less

TR-PSL2 - Recommended for use in sheet hardness: HRB 80 or less

