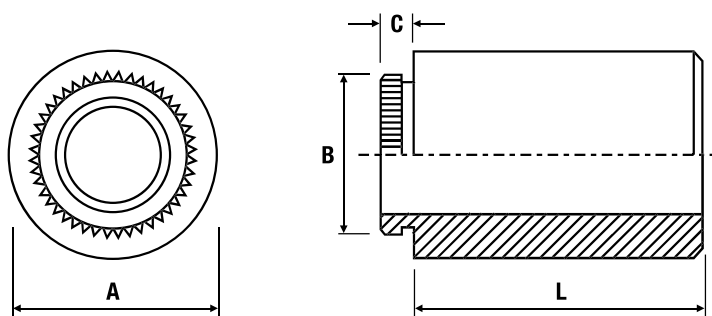


Broaching Through Hole Standoff TR-KFE/TR-KFSE



Metric Dimensions

Electro Tin Plated Steel: TR-KFE | Stainless Steel: TR-KFSE

Through hole size	3.6	4.2
A ± 0.13	7.14	8.74
B ± 0.08	5.87	6.86
C max.	1.53	1.53
Min. sheet thickness	1.53	1.53
Recommended hole size +0.08	5.41	6.4
Min. distance to edge of sheet	5.5	7.1

Length (L) ± 0.13	3	4	5	6	8	10	12	14
-----------------------	---	---	---	---	---	----	----	----

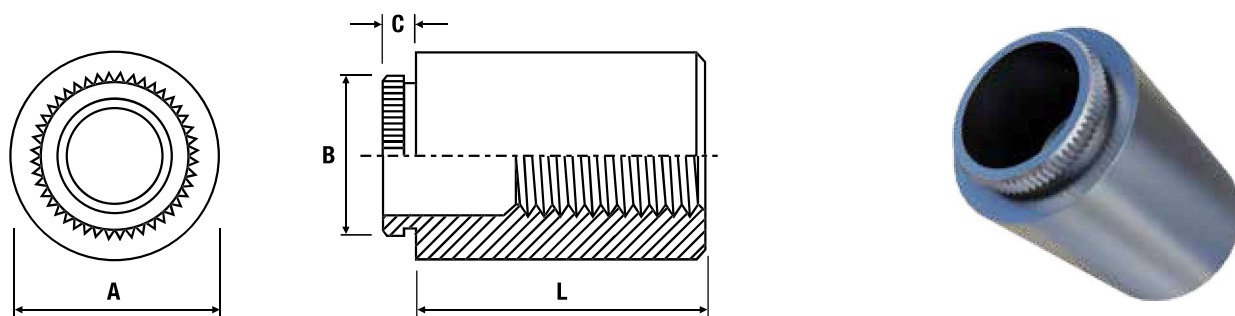
Metric Performance Data

Through hole size	3.6	4.2
Test sheet material	FR4 fibreglass	
Installation (kN)	2.2	2.2
Push-out (N)	330	420

TR-KFE - Recommended for use in sheet hardness: HRB 60 or less
 TR-KFSE - Recommended for use in sheet hardness: HRB 70 or less



Broaching Threaded Standoff TR-KFE/TR-KFSE



Metric Dimensions

Electro Tin Plated Steel: TR-KFE | Stainless Steel: TR-KFSE

Thread	M3	M4
A ± 0.13	5.56	8.74
B ± 0.08	4.68	6.75
C max.	1.53	1.53
Min. sheet thickness	1.53	1.53
Recommended hole size +0.08	4.22	6.4
Min. distance to edge of sheet	4.4	6.4

Length (L) ± 0.13	3	4	5	6	8	10	12	14	16

Metric Performance Data

Thread	M3	M4
Test sheet material	FR4 fibreglass	
Installation (kN)	2.2	2.2
Torque-out (Nm)	1.4	3.0
Push-out (N)	290	400

TR-KFE - Recommended for use in sheet hardness: HRB 60 or less

TR-KFSE - Recommended for use in sheet hardness: HRB 70 or less

