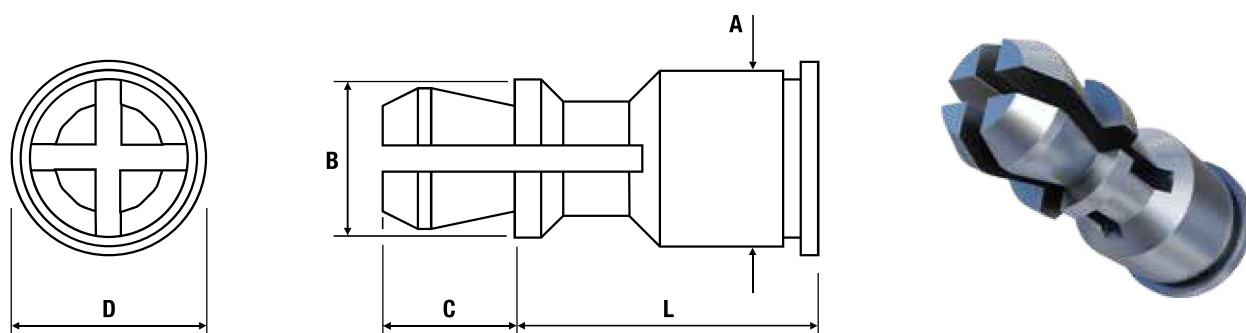


Clip-on Standoff TR-SSS/TR-SSC/TR-SSA



Metric Dimensions

Zinc Plated Steel: TR-SSS | Stainless Steel: TR-SSC | Aluminium: TR-SSA

Top panel mounting hole diameter	4mm
A max.	5.39
B ± 0.13	4.78
C ± 0.13	3.58
D ± 0.13	6.35
Recommended hole size +0.08	5.4

Length (L) ± 0.13	8	10	12	14	16	18	20	22	25
-----------------------	---	----	----	----	----	----	----	----	----

Part number	Panel 1 - Metal HRB50					Panel 2 - PCB or metal			
	Bottom mounting hole +0.08	Max. hardness	Min. thickness	Min. distance to edge of sheet	Max. location tolerance	Top mounting hole +0.08	Max. hardness	Thickness range	Min. distance to edge of sheet
TR-SSS	5.41	HRB 60	1.0	6.6	± 0.13	4.0	No limit	1-1.8	2.54
TR-SSC		HRB 70							
TR-SSA		HRB 50							

Metric Performance Data

Type	TR-SSS	TR-SSC	TR-SSA
Test sheet material	Steel	Steel	Aluminium
Installation (kN)	15.6	16.5	6.7
Push-out (N)	1785	1785	880

TR-SSS - Recommended for use in sheet hardness: HRB 60 or less
 TR-SSC - Recommended for use in sheet hardness: HRB 70 or less

TR-SSA - Recommended for use in sheet hardness: HRB 50 or less

