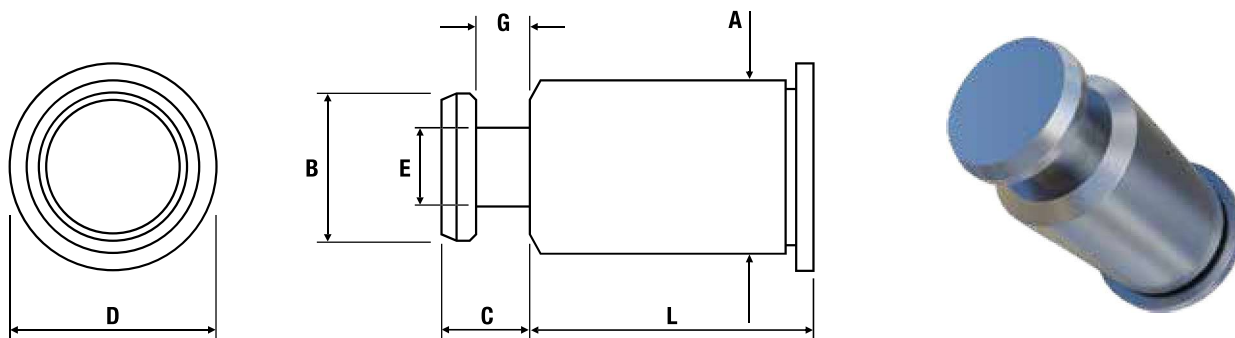


Hole Slide Standoff TR-SKC



Metric Dimensions

Stainless Steel: TR-SKC

Body size - Sheet code	61.5
A max.	5.39
B ± 0.08	4.5
C max.	2.75
D nom.	6.35
E	2.51
G ± 0.08	1.73
Recommended hole size + 0.08	5.5

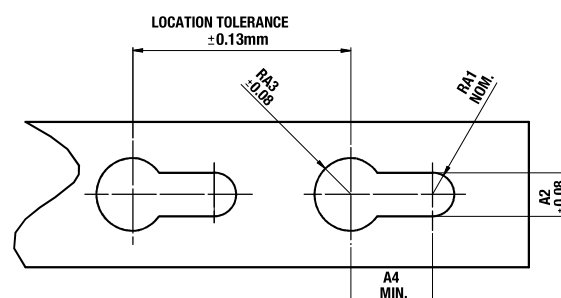
Length (L) ± 0.13	2	4	6	8	10	12	14	16	18	20	22	25
-----------------------	---	---	---	---	----	----	----	----	----	----	----	----

Metric Performance Data

Body size - Sheet code	61.5
Test sheet material	Steel
Test sheet thickness	1.52
Installation (kN)	14.3
Push-out (N)	2650

Part number	Panel 1 - Metal HRB50					Panel 2 - PC board or metal					
	Bottom mounting hole +0.08	Max. hardness	Min. thickness	Min. distance to edge of sheet	Max. location tolerance	Top mounting hole +0.08				Thickness range	Min. distance to edge of sheet
						A1 nom.	A2 ± 0.08	A3 ± 0.08	A4 min.		
TR-SKC	5.4	HRB 70	1.0	6.6	± 0.13	1.5	3.0	5.0	3.75	1.45 - 1.62	4.1

TR-SKC - Recommended for use in sheet hardness: HRB 70 or less



www.trfastenings.com

Go to our website to view preferred ranges, download 3D models and view installation animations

