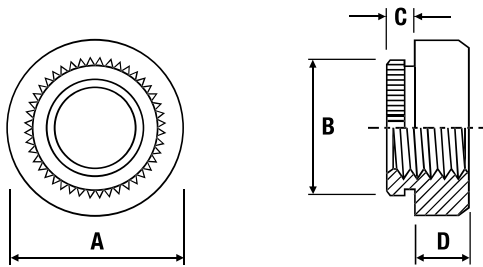


# Broaching Nut TR-KF2/TR-KFS2



## Metric Dimensions

Electro Tin Plated Steel: TR-KF2 | Stainless Steel: TR-KFS2

Thread	M2	M2.5	M3	M3.5	M4	M5
C max.	1.53	1.53	1.53	1.53	1.53	1.53
B ±0.08	4.19	4.68	4.68	5.88	6.86	7.37
A ±0.13	5.56	5.56	5.56	7.0	8.74	9.53
D ±0.13	1.5	1.5	1.5	1.6	2.0	3.0
Min. sheet thickness	1.53	1.53	1.53	1.53	1.53	1.53
Recommended hole size +0.08	3.73	4.22	4.22	5.5	6.40	6.90
Min. distance to edge of sheet	4.2	4.4	4.4	5.5	6.4	7.1

## Metric Performance Data

Thread	M2	M2.5	M3	M3.5	M4	M5
Test sheet material	FR4 fibreglass					
Test sheet thickness	1.5					
Installation (kN)	2.2	2.2	2.2	2.2	2.2	2.9
Torque-out (Nm)	0.70	0.70	1.70	1.70	3.40	4.55
Push-out (N)	260	260	290	290	420	440

TR-KF2 - Recommended for use in sheet hardness: HRB 60 or less

TR-KFS2 - Recommended for use in sheet hardness: HRB 70 or less

