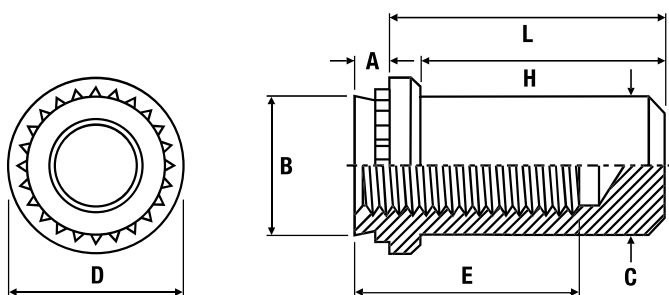


Blind Nut TR-B/TR-BS



Metric Dimensions

Zinc Plated Steel: TR-B | Stainless Steel: TR-BS

Thread	M3		M4		M5		M6	
Shank code	1	2	1	2	1	2	1	2
A max.	0.97	1.38	0.97	1.38	0.97	1.38	1.38	2.21
Min. sheet thickness	1.0	1.4	1.0	1.4	1.0	1.4	1.4	2.29
Recommended hole size +0.08	4.22		5.41		6.35		8.75	
B max.	4.20		5.38		6.33		8.73	
C max.	3.84		5.2		6.02		7.8	
D ±0.25	6.35		7.95		8.75		11.1	
E min.	5.3		7.1		7.1		7.8	
H ±0.25	9.6		11.2		11.2		14.3	
L max.	8.5		9.8		9.8		12.7	
Min. distance to edge of sheet	4.8		6.9		7.1		8.6	

Metric Performance Data

Thread	M3		M4		M5		M6	
Shank code	1	2	1	2	1	2	1	2
Test sheet material	Steel							
Sheet thickness	1.0	1.4	1.0	1.4	1.0	1.4	1.4	2.3
Installation (kN)	11.5	14.0	16.0	21.0	18.0	25.0	26.0	26.0
Push-out (N)	572	1020	605	1256	630	1110	1782	1782
Torque-out (Nm)	1.7	2.15	3.5	5.1	4.1	6.9	11.9	11.9

TR-B - Recommended for use in sheet hardness: HRB 80 or less

TR-BS - Recommended for use in sheet hardness: HRB 70 or less

